



Kivuto™

Digital Distribution. Simplified.

Working with Image Files
(IMG and ISO)
2015-03-03
Version 3.2

TABLE OF CONTENTS

ISO and IMG Files.....	2
What is an IMG or ISO File?	2
32-Bit vs 64-Bit.....	2
Bootable Installation Packages	3
Package? Image? Disk/Media?	3
Bootable Installation Package	3
What do I do with My Installation Package?	4
Creating Bootable DVD Media	5
Requirements.....	5
Obtaining Free DVD-Burning Software.....	5
Launching the Burning Software.....	5
Selecting the Image to Burn	5
Burning the DVD	7
Installing your Software.....	8
Creating Bootable USB Media	9
Requirements.....	9
Procedure	9
Installing your Software.....	12

ISO and IMG Files

WHAT IS AN IMG OR ISO FILE?

An IMG or ISO file is a complete image of physical media such as a CD-ROM, DVD, floppy disk, etc. that contains all of the files in a particular package.

32-BIT VS 64-BIT

Many packages are offered in both 32-bit and 64-bit versions. In the case of Windows 7, this applies to all of the Home, Premium, Professional and Ultimate editions. License keys provided for any of these editions will work for both 32-bit and 64-bit versions. The choice of version is up to you and is directly related to the ability and compatibility of your hardware.

To run 64-bit versions, your computer hardware must support 64-bit applications for this product to function. Refer to your manufacturer and/or retailer for specific information regarding the capabilities of your hardware, and consult your WebStore's Help page for details on how to determine which version is most appropriate for your computer.

Important: If you are planning to upgrade from an existing 32-bit Operating System to the 64-bit version, you must use Custom Install as the Upgrade Install option may not be available.

Bootable Installation Packages

PACKAGE? IMAGE? DISK/MEDIA?

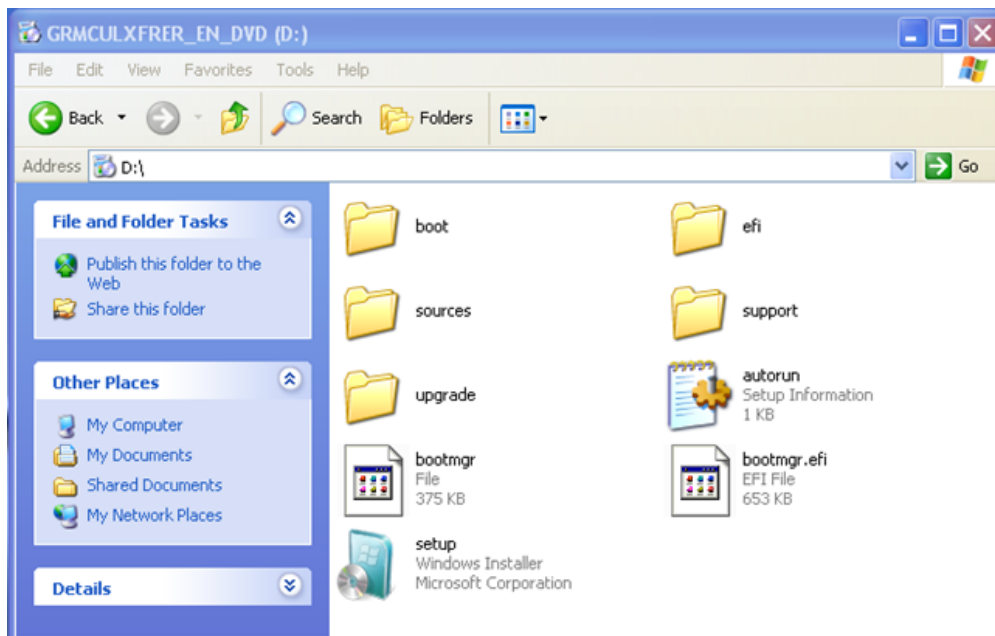
This document refers to installation packages, installation images and installation disks. These items are defined as follows.

- **Installation Package:** what you purchase from the WebStore
- **Installation Image:** the content of the installation package
- **Installation Disk/Media:** what you produce from the installation image through the burning process

BOOTABLE INSTALLATION PACKAGE

The bootable installation package contains a disk image that is identical to the boxed product that you would purchase at any software retail outlet. This image may be burned directly to physical media to produce a bootable installation DVD.

Once copied to physical media, this package may be used to install an Operating System on any compatible hardware, with or without an existing Operating System installed.



WHAT DO I DO WITH MY INSTALLATION PACKAGE?

Your installation package contains one of the images identified in the previous section. To install any software package from an image, the image itself must first be “mounted” by the Operating System. This can be accomplished by:

- Burning the image directly to DVD with the source type specified as “image”. Once the burning of the image is complete, the physical media can be inserted into the computer and will be recognized like any other DVD. You must have a writable DVD drive. See the [Creating Bootable DVD Media](#) section.
- Burning the image directly to a USB flash drive. This is particularly useful for those people who have Netbooks or other computers without a writable DVD drive. See the [Creating Bootable USB Media](#) section.

Note: Burning the file to a disk as a “data disk” will simply end up with an IMG or ISO file on the disk, which cannot be used for the installation.

Creating Bootable DVD Media

REQUIREMENTS

To prepare physical media from a bootable installation image, you require the following:

- The bootable Installation image (i.e. the IMG or ISO file)
- A writable DVD drive (DVD-R, DVD-RW, DVD+R, DVD+RW)
- A writeable DVD media
- CD/DVD Burning Software (Roxio®, Nero ©, Active@ ISO Burner, etc.)

OBTAINING FREE DVD-BURNING SOFTWARE

If you do not already have an application to burn files onto a DVD, you will need to download a freeware version.

This document describes the process using **Active@ ISO Burner** (available through NTFS.com at <http://software.isoft.net/IsoBurner-Setup.exe>). This is the application that we recommend you use. However, the same general process described in this document should apply regardless of what software you choose to use, as most CD/DVD burning tools share a similar interface.

LAUNCHING THE BURNING SOFTWARE

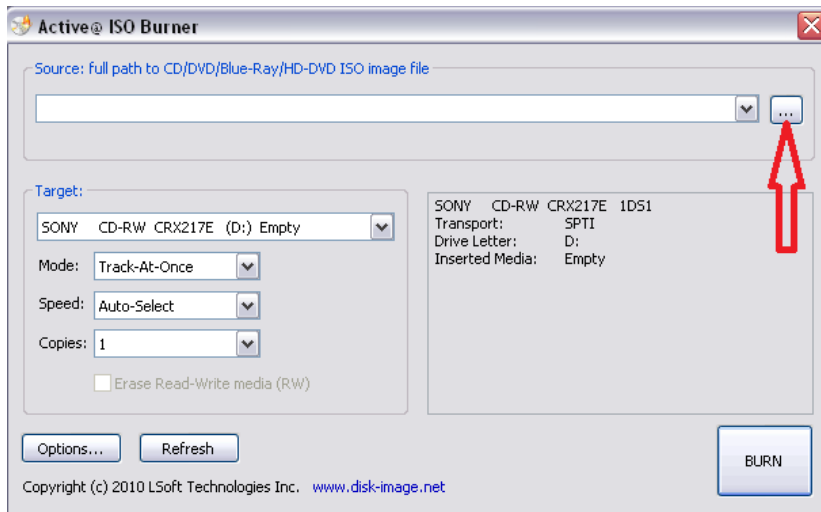
To launch the burning software:

1. Click **Start**.
2. Click **Programs** (or **All Programs**, depending on your version of Windows).
3. In the list of programs, click **Active@ ISO Burner**. The program is launched.

SELECTING THE IMAGE TO BURN

To select the image to burn:

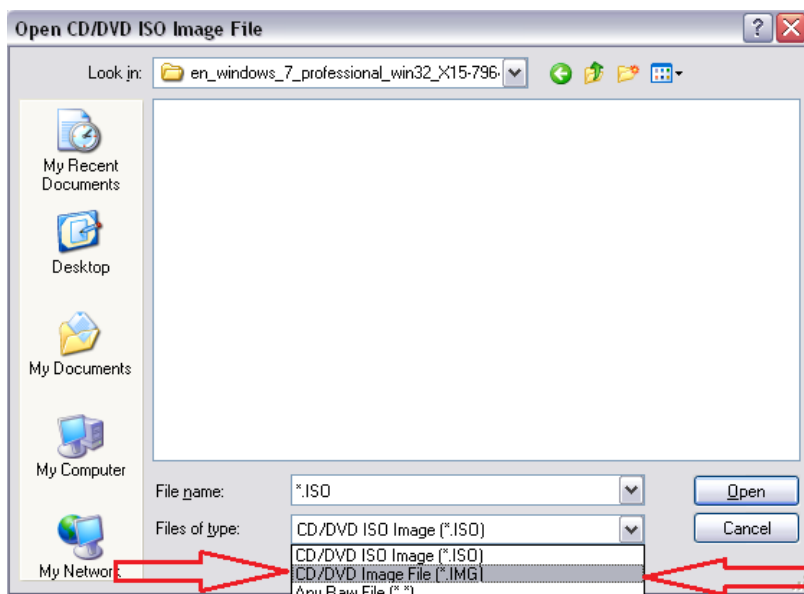
1. In the Active@ ISO Burner window, click on the locator box as shown by the red arrow.



2. Find and select the IMG file you downloaded.

Note: Frequently files are downloaded to **C:\temp**. If you find two subfolders for the software - one for the 32-bit version and one for the 64-bit version, be sure to choose the appropriate version for your machine. Consult your WebStore's Help page for information on the difference between 32-bit and 64-bit software.

3. In the "Files of type" drop-down list, select the **CD/DVD Image File (*.img)** option. The IMG file is displayed in the window. If you wish to burn an ISO file, choose the **CD/DVD ISO image (*.iso)** option.



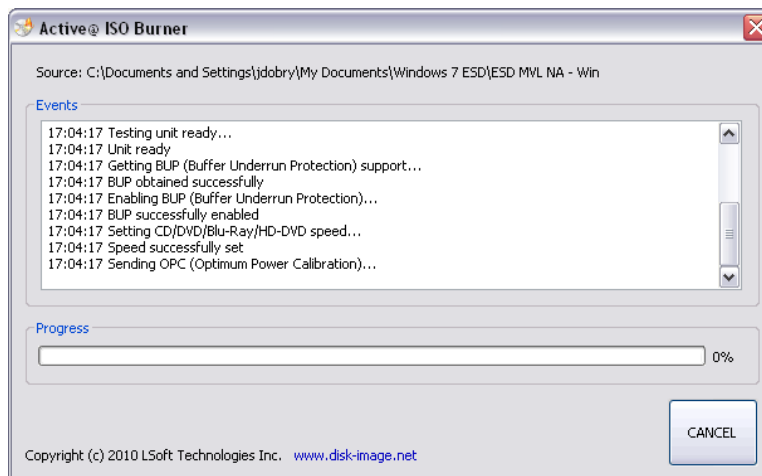
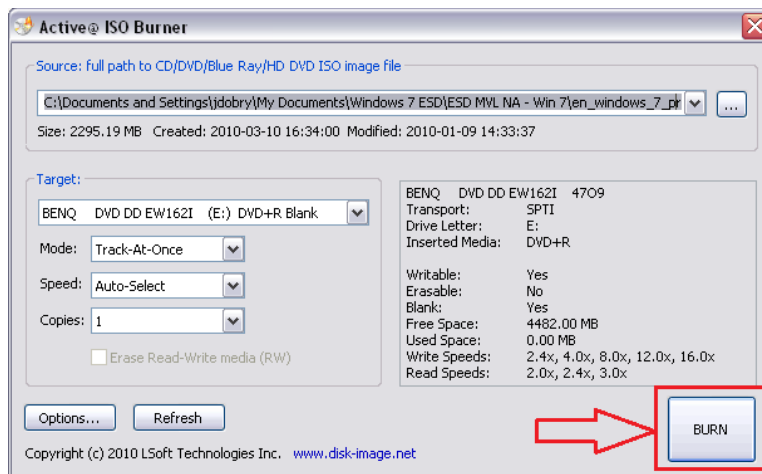
4. Double click on the file. The Active@ ISO Burner window is displayed.

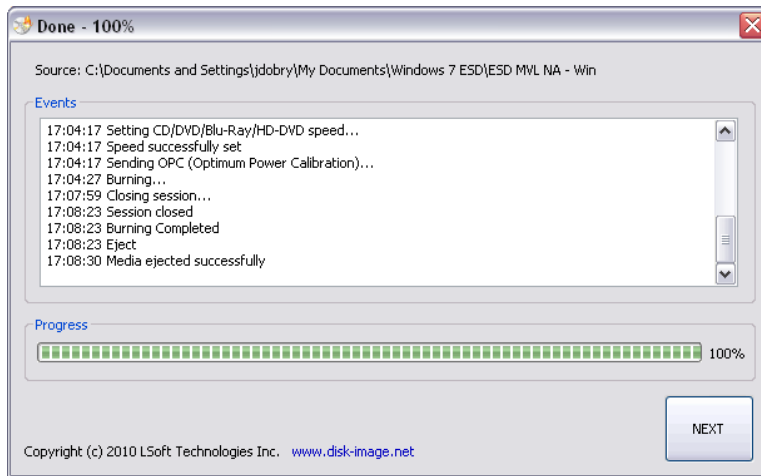
BURNING THE DVD

Make sure the disk you are using is a DVD and not a CD. Also, make sure that you are using a DVD burner, as a CD burner will not work with this process.

To burn the DVD:

1. Place a blank DVD into the DVD drive.
2. Click the **Burn** button. The progress of the burn is displayed near the bottom of the window.





3. When the disk is ejected, click the red X at the top of the window to close the program.

You now have a copy of the software and are ready to install it.

INSTALLING YOUR SOFTWARE

Once your installation disk has been burned, navigate to the root of the DVD directory and double-click the file **Setup.exe** to launch the installation of your software.

Creating Bootable USB Media

REQUIREMENTS

To create a bootable USB flash drive, you will require:

- Bootable Installation image (i.e. the IMG or ISO file)
- A USB flash drive with at least 4 GB of storage space

Note: Any existing data on the USB device will be lost. Ensure that you have backed up any important information.

- The [Windows 7 USB/DVD Download Tool](#) (WUDT)

WUDT runs on Windows XP, Windows Vista and Windows 7, and supports localized language versions such as German, English, French, Italian, Simplified Chinese, Hebrew, Arab, Czech, Danish, Traditional Chinese, Norwegian, Japanese, Korean, Dutch and Spanish.

PROCEDURE

The following instructions were adapted from a tutorial found on [MyDigitalLife](#). Refer to this tutorial if you require more information.

To create bootable USB Media:

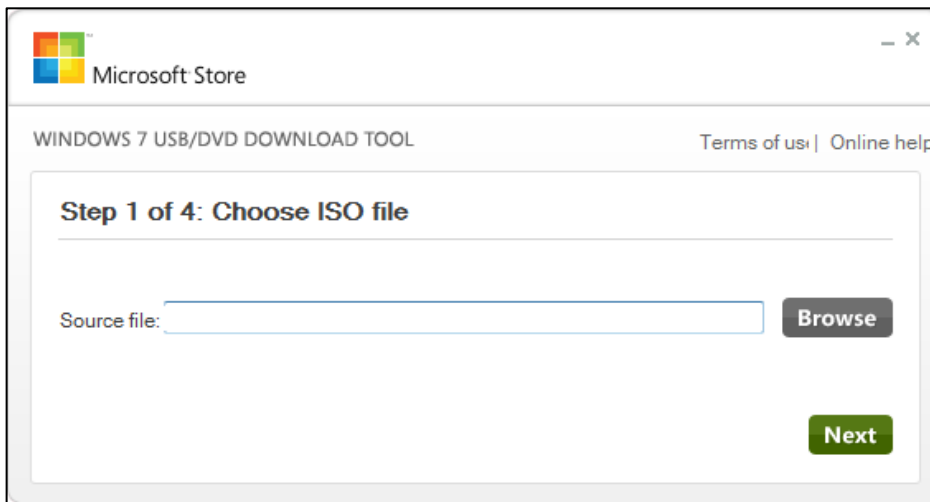
1. Download the IMG or ISO file.
2. If you downloaded an IMG file, change the extension to .ISO before proceeding.

Note: To convert an IMG to an ISO:

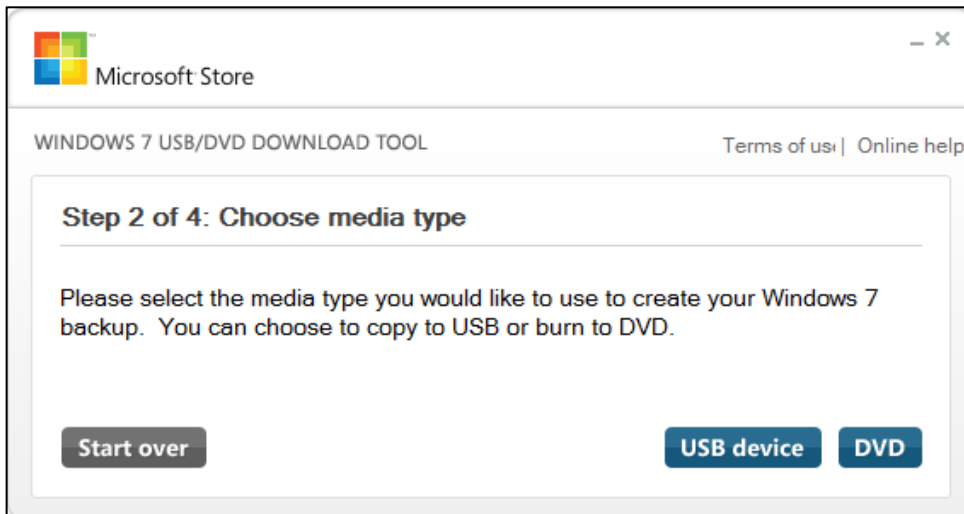
- i. Open the folder where your IMG file is located.
- ii. Click: **Tools » Folder Options**. (Note: If you do not see a “Tools” menu at the top of the folder, press **Alt** to display it.)
- iii. Click the **View** tab.
- iv. Turn off the option **Hide Extensions for Known File Types** (if it is currently active), and then click: **OK**.
- v. Right-click your IMG file and click: **Rename**.
- vi. Replace the “.img” at the end of the file name with: “.iso” and then hit enter.

3. Download and install [the WUDT](#).

4. Run the WUDT.
5. In the **Source file** box, type the name and path of your ISO file, or click **Browse** and then find/select the file.



6. Click the **Next** button.
7. Click the **USB device** button:

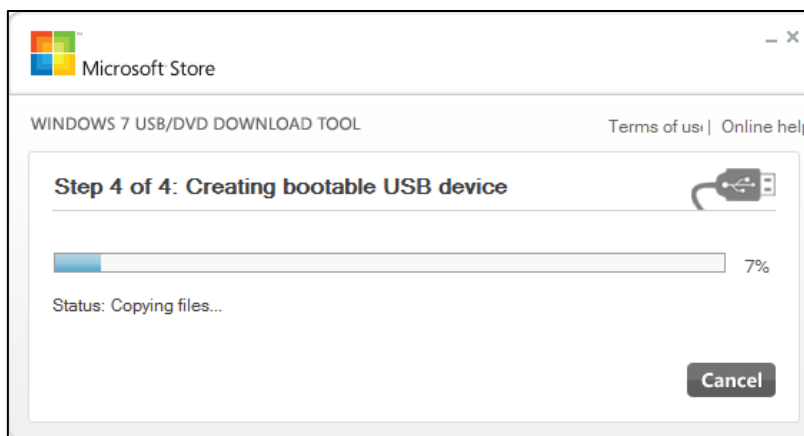
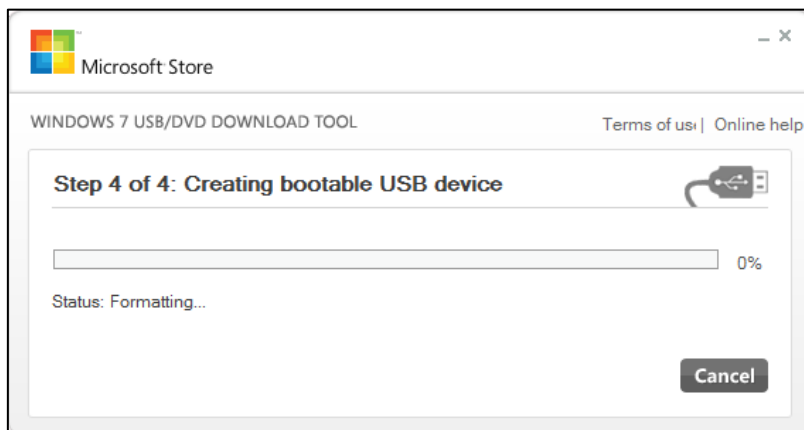
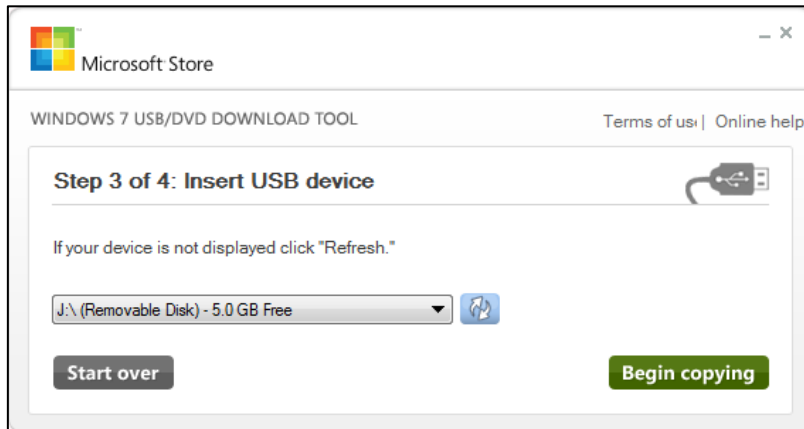


8. Click the **Next** button.
9. Insert a USB flash drive into one of your computer's USB port.

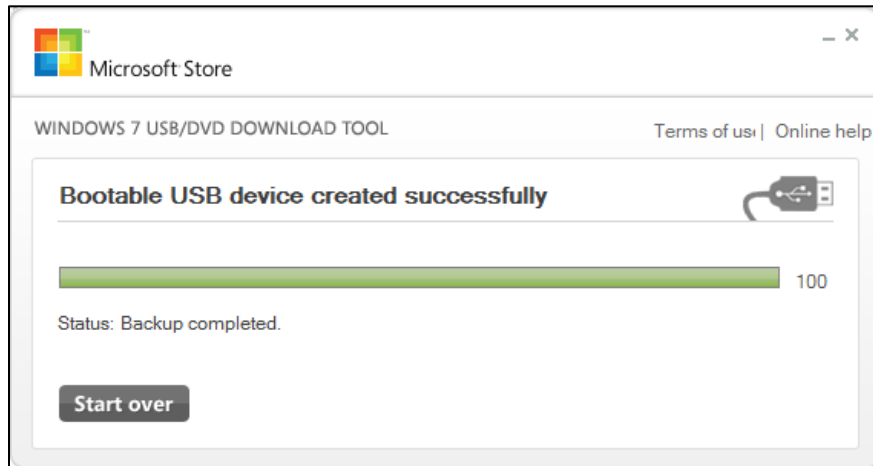
Note: Make sure that no important data is stored on the USB device as it will be formatted when

you start the copying process and all data will be lost.

10. Select your USB device in the dropdown list and click **Begin copying**. The WUDT will format the storage media and then copy the ISO over to the media.



Once the bootable USB device has been successfully created, you are ready to install your software.



INSTALLING YOUR SOFTWARE

Once your USB media has been created, navigate to the root of the USB drive and double-click the file **Setup.exe** to install your software.